



## QUICK RECOVERY FOR REISER-FS

[Quick Recovery for ReiserFs](#)

[Operation Steps](#)

[Who suffers most](#)

[Features Quick Recovery for ReiserFs](#)

[Recovery Modes](#)

[Quick Mode](#)

[Advance Mode](#)

[Frequently Asked Question](#)

## Quick Recovery for ReiserFs

Quick Recovery for ReiserFs is an advance Data recovery Software tool. It recovers Data from Hard Disk where Super Block is accidentally deleted or Data Structure (VTOC, Boot Block, Super Block, Inodes, and Data Block) is damaged. It performs complete scan of damaged Hard Disk and Extract data from it and displays it in a tree structure. Quick Recovery for ReiserFs software uses GFETch (Guided File Excavation Technology) for searching and retrieving the data and hence is a fast, simple and easy to use advance data recovery software tool.

### There are two operation steps:

#### Analysis:

This step involves the complete diagnosis and search operation. Quick Recovery searches for the file system information from the beginning of the disk and reverse calculates the disks file structure. The various file system information comprises VTOC, Boot Block, Super Block, Inodes, and Data Block. Quick Recovery also finds previously existed partitions. The analysis is to be followed in three modes. First the **Quick mode** has to be run. This mode quickly analyses the disk and displays the files. Most of the cases are resolved in this mode itself, Cases where partition, boot records are damaged then Quick Recovery goes into this Mode. In cases where quick mode does not show the required files to be recovered, then choose **Advance mode**. This is an exhaustive method where all lost folders/files are excavated and our proprietary algorithm (GFETch) is used. This mode is to be used for extreme cases like Block corruption or long lost folders.

#### Display & Save:

After the analysis, all files and folders will be displayed. Select the folders/files that are to be recovered and save them to a working disk.

### Features Quick Recovery for ReiserFs

- Recovers ReiserFs data from accidental File Deletion.
- Recovers data even if disk is not accessible.
- Search heuristics help locate partitions and folders quickly. GUI designed to have least user interaction.
- Locating ReiserFs partition in dual booting disk supported.
- Recovers files even if partition is lost.
- Recovers even if there is corruption of Super Block.
- Completely access files if Login password is lost.

## 100% data recovery is possible if;

If there is problem with Partition Table, Boot Block and Data Block.  
Files are accidentally deleted. Operating system not booting.  
Disk has been formatted and small files are to be recovered.  
Drive is not shown or accessible

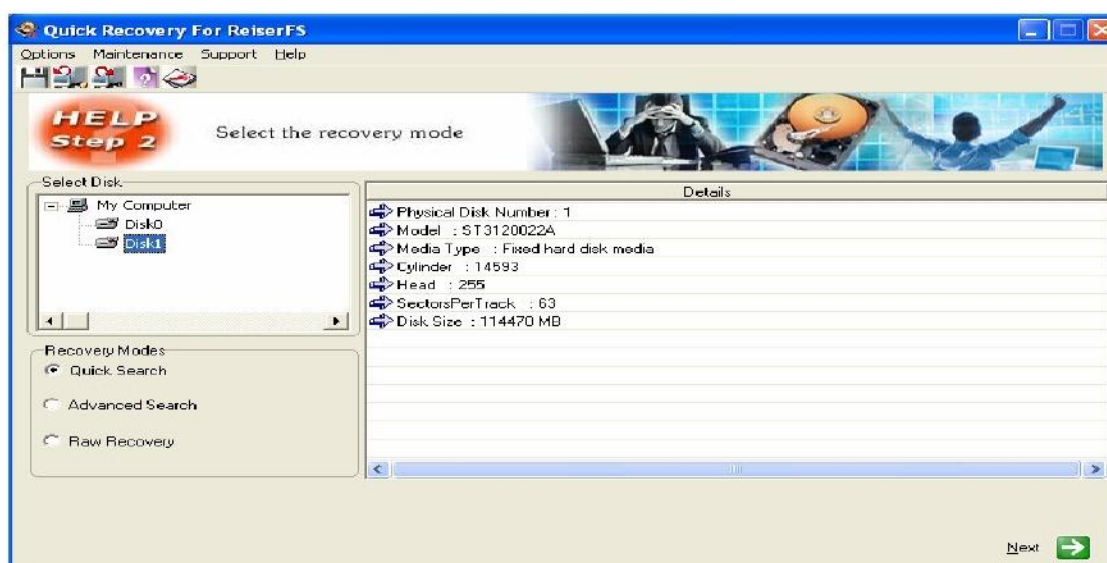
## How Quick Recovery ReiserFS Works?

Install the **Quick Recovery ReiserFS** on a working computer having windows operating System  
Attach the crashed ReiserFs disk as secondary master or slave  
Run **Quick Recovery ReiserFS**  
After complete analysis the found folders and files will be displayed  
Select file or folder to recover, give the target path where, the file(s)/folder(s) to be recovered

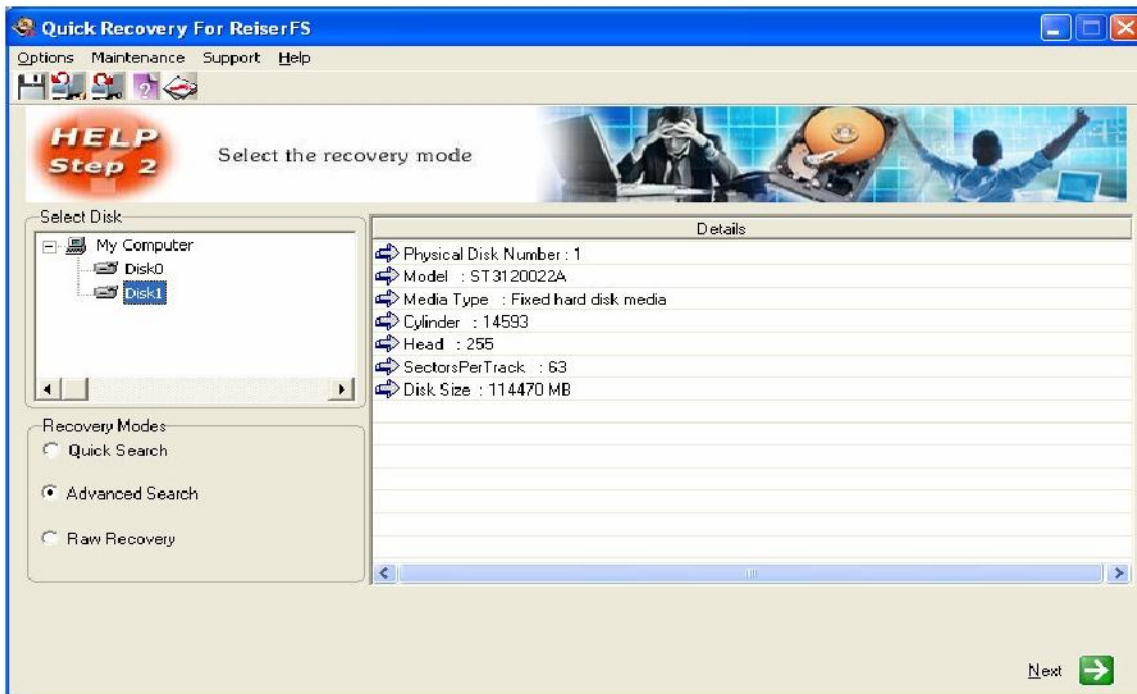
## Recovery Modes

Two recovery modes of quick recovery are explained as follows:

**Quick Search:** The analysis is done in three modes. First the Quick Search has to be run. This search quickly analyses the disk and displays the ReiserFS Partition.



**Advance Search:** In cases where Quick Search does not show the required ReiserFS Partition. This is an exhaustive method which searches for partition. This mode is to be used for extreme cases like changed partitions.



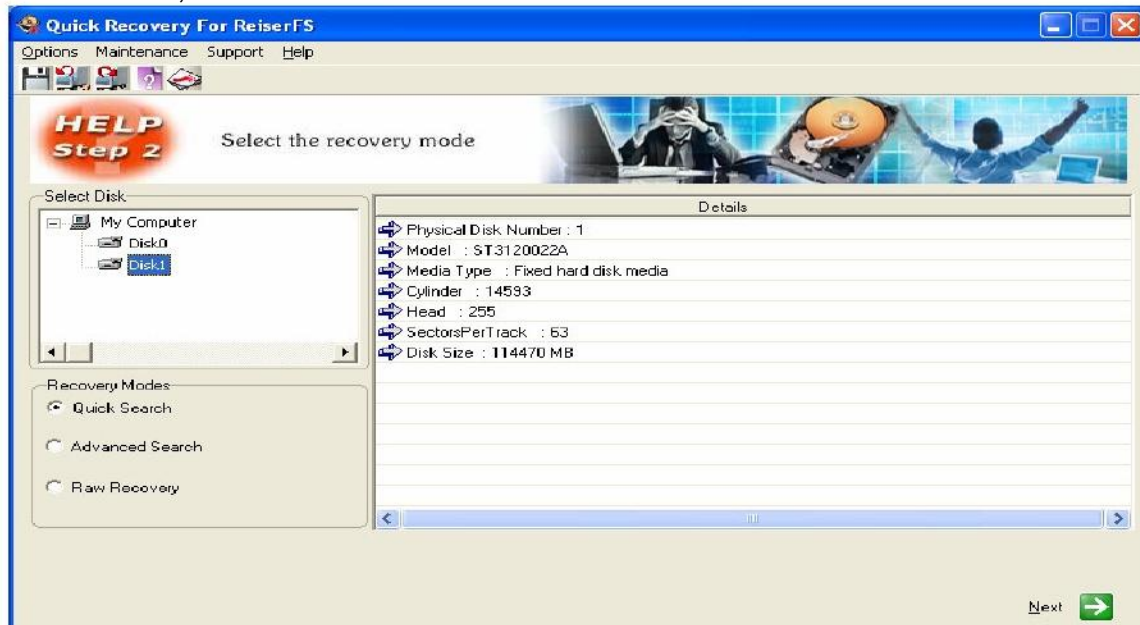
All modes of recovery are read only, safe to use and no damage or write operations are performed.

## Recovery Procedure

Verify that the primary disk has Quick Recovery installed in it. Connect the crashed drive as a slave or secondary in the computer, Open Quick Recovery for ReiserFS.

From the first menu verify that both the drives are listed. Click on the Drive 1 (crashed disk) and its manufacture details will be displayed on the right Choose the recovery mode. It is preferred to select Quick Search for the first analysis.

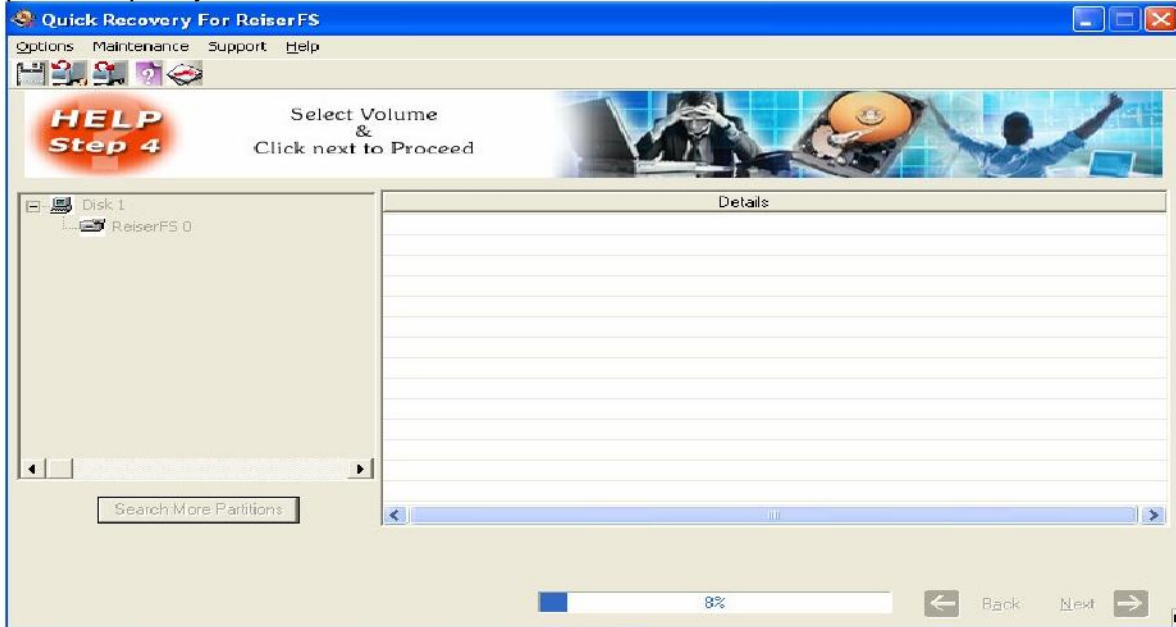
Click on Next,



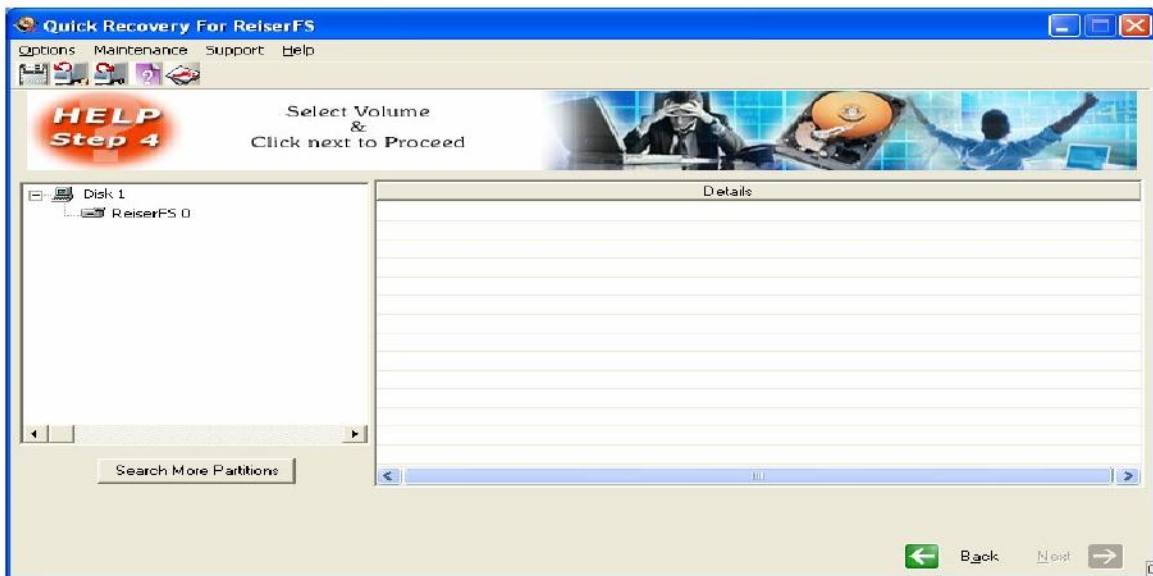
Now you will be shown the list of partitions in the selected drive. Select the partition that needs to be recovered. If all the partitions are not listed then click on search for more partitions. Only one partition can be selected at a time. Click on Next,



If all the partitions are not listed then click on search for more partitions. It searches partition quickly.



Select ReiserFS Partition from which you want to recover data. Click on Next button.



**Quick File/Folder Search:** - It will searches for files & folder quickly.

**Advance File/Folder Search:** - It is useful for those cases where Quick File/Folder Search is unable to show you file/folder desired. It is a time taking process because it simulates file/folder by searching on each block start.

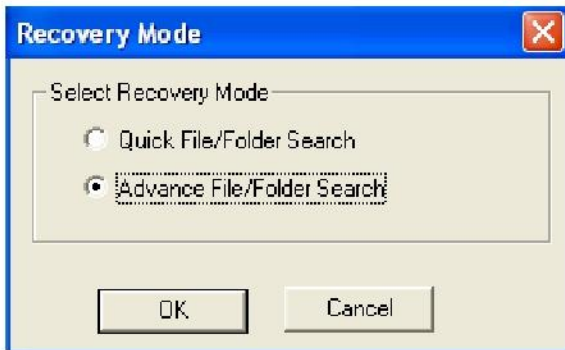


When Quick File/Folder is selected the analysis will start for searching files/folders. It accordingly shows number of files/folder found. You can click on stop searching at any point to look at directory structure found.

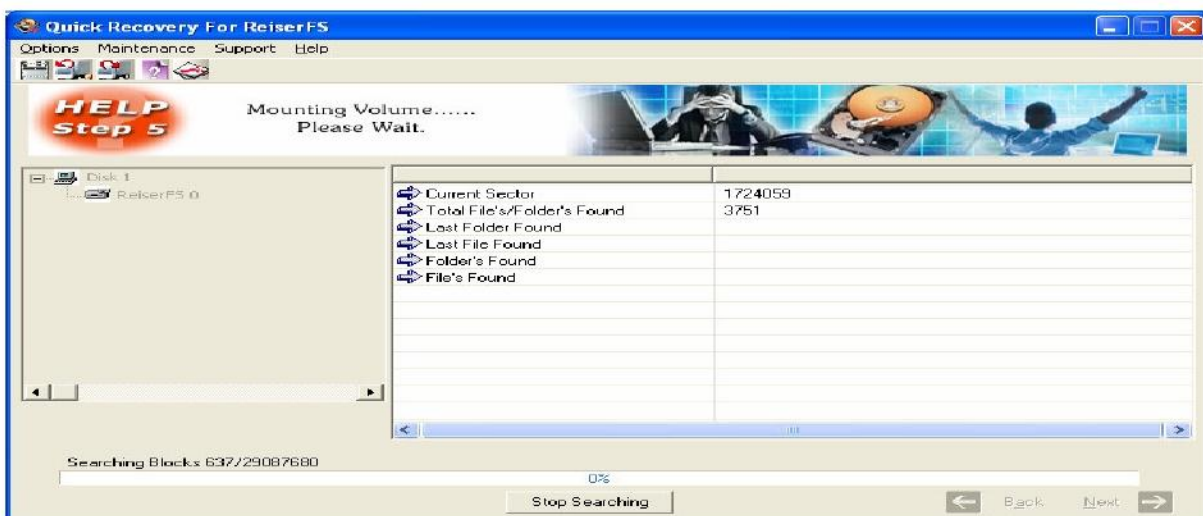


When Advance File/Folder is selected the analysis will starts searching files/folders using extensive algorithms. This mode is best when Quick File/Folder is unable to show you the desired result. It is best for corrupt partitions. It accordingly shows number of files/folder found. You can click on stop searching at any point to look at directory structure found.

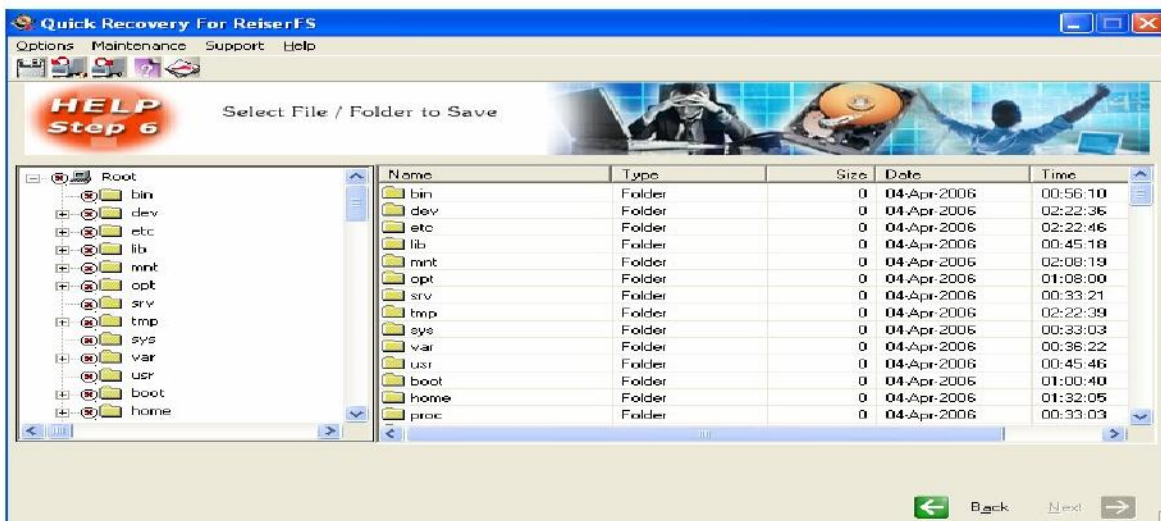




It Searches for Files/Folders in block start & accordingly dumps information & display.

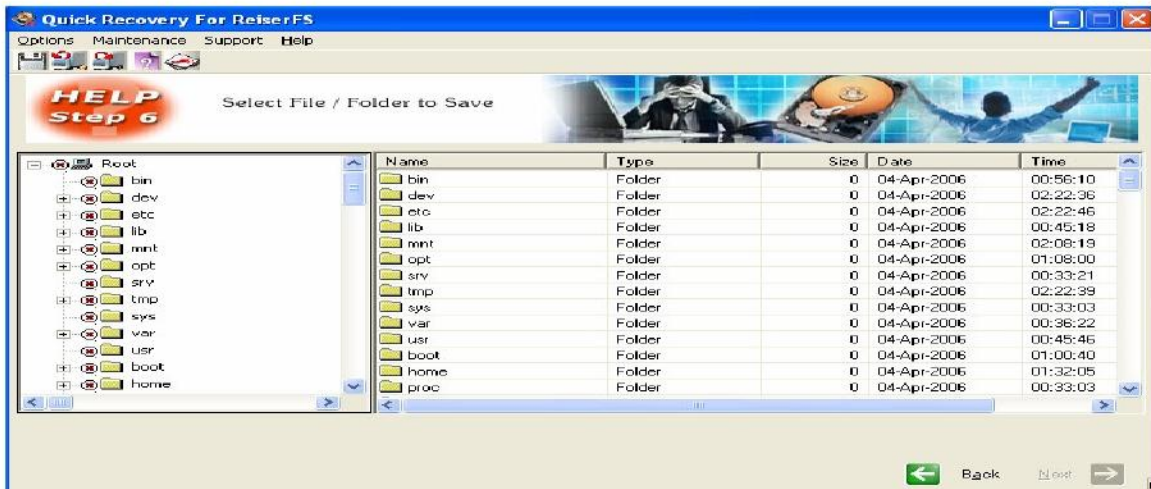


For both modes next screen would be:  
As soon as the search and analysis is done, the directory list will be displayed.  
This display is like that of explorer



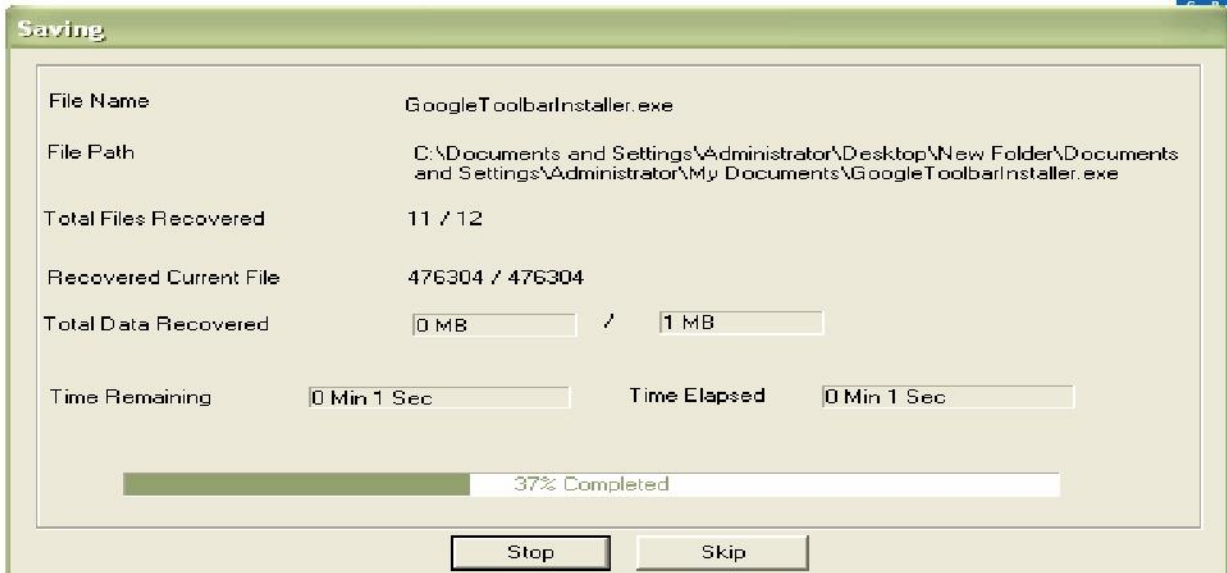


Now the menu bar options will be active. Select the folders by the highlighting the folder using mouse by single mouse click and shift + mouse click for multiple folders or files



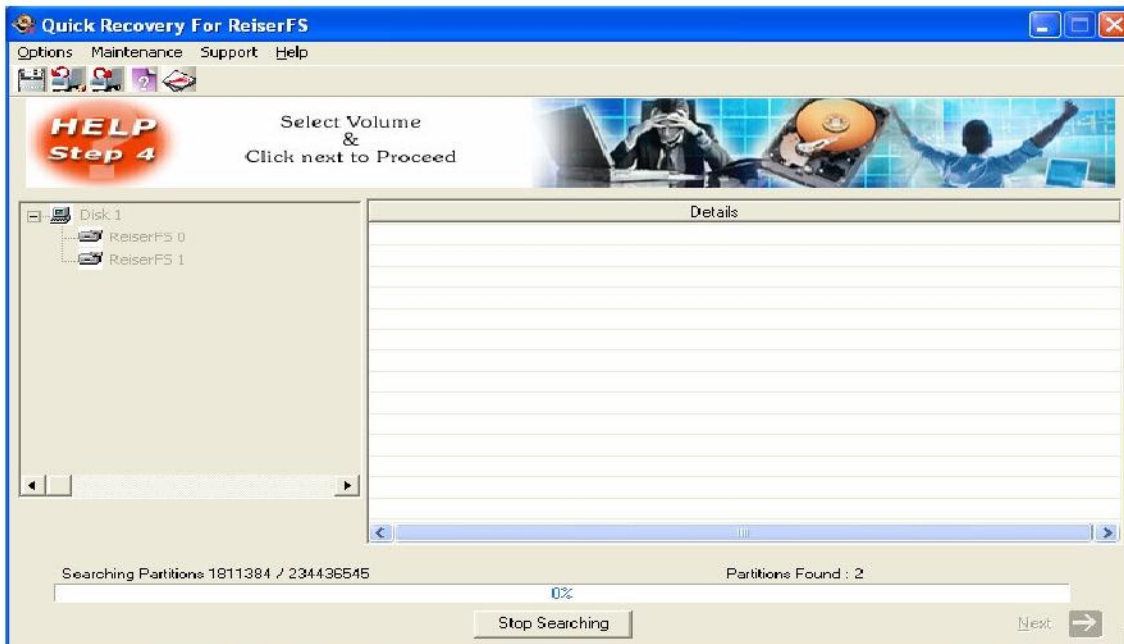
To save the selected files, right click on the required folder or file and click on save. Alternatively choose Options > Save. Now a menu will be shown where you may enter the path to save the selected files





### Advance mode

It could take some minutes. It searches for ReiserFS volumes in Disk Selected.



Again selecting any partition. It will show you Recovery Mode selection dialog.



### **File System Supported**

- ReiserFS

### **System Requirements**

- Windows NT/2000/XP/2003 Server/Vista/ Windows 7/Windows 8
- 800MHz processor or higher
- RAM:
  - 256 MB (Windows XP)
  - 1 GB (Windows Vista, Windows 7 & Windows 8)
- 50 MB available hard disk space

## **FREQUENTLY ASKED QUESTIONS**

### **How does QUICK RECOVERY work?**

QUICK RECOVERY is a data recovery software. It bypasses the operating system, calculates the system parameters internally, and searches for data heuristically. After a brief analysis QUICK RECOVERY reports the percentage of recovery and files that can be recovered.

### **If my computer is not booting, then how can QUICK RECOVERY access it?**

Install Quick Recovery on a working system having Windows as Operating System and attach the crashed hard disk as secondary. Quick Recovery will bypass the operating system and can access crashed hard disk.

### **Why cannot QUICK RECOVERY recover 100% data from large deleted files?**

When files are deleted, they are not removed from their physical location but their links get zeroed up. So if large files are fragmented, then their chain cannot be reconstructed. Smaller files are mostly stored contiguously and are not fragmented, so they can be recovered.

### **Why cannot QUICK RECOVERY recover 100% data from formatted disks?**

The reason is the same as above. After formatting, the links get fully zeroed. Moreover if files and folders have been copied after formatting, then nothing can be retrieved.

### **Why cannot we recover the files on the same partition?**

This is because, the lost files when recovered on the damaged partition may overwrite the lost files, and hence the recovery may not be authentic or 100%.